

Our Commitment to Safe Operations

Pembina Pipeline Corporation is a leading transportation and midstream service provider. For over 60 years, we have been safely and reliably connecting oil and gas production to markets that need it.

Working safely is a way of life at Pembina. Our success depends upon ensuring the safety of the public and our people throughout the communities where we operate.

We believe all incidents can be prevented and we work hard – through careful monitoring, the use of leading-edge technology, and comprehensive safety planning – to keep our systems as safe as possible.



Monitoring our Operations

Pipelines and facilities are long-life assets that need to be maintained and monitored. Pembina's operations teams are responsible for the safe and reliable operation of our assets. They accomplish this by routinely inspecting the pipeline right-of-way, monitoring our systems through our 24/7/365 control centre, and ongoing communications with our neighbors.

Diligent Monitoring of the Right-of-way



The pipeline right-of-way is regularly inspected through ground observations and flyovers using helicopters and fixed-wing planes.

Two-Way Communication with Stakeholders



Having open dialog with our stakeholders from the first time we knock on your door to when the pipeline is decommissioned is extremely important to us. If you have any questions or concerns about the pipeline, please call the operations office nearest you.

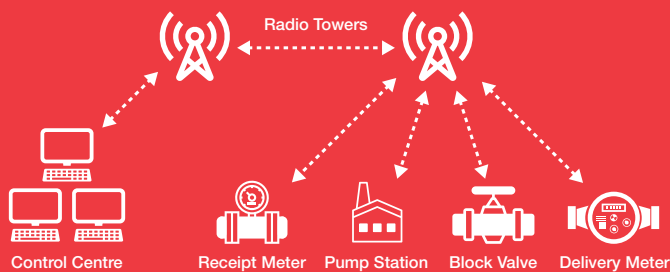
24/7/365 Control Centre



Pembina's Control Centre is the 'eyes and ears' of the pipeline system. Operators at our Control Centre manage the pipelines, control product shipments and respond to any abnormal operating conditions.

Real-time Monitoring

Our Control Centre operators use the SCADA (Supervisory Control and Data Acquisition) system to control, schedule and monitor our operations 24/7/365. The SCADA system sends a direct signal between our operations and our Control Centre, this enables us to receive real-time data and allows us to automatically control our operations.



Using leading-edge technology to keep our assets safe

We inspect and protect our pipelines using leading-edge technology to guard against damage and provide us with detailed information. These technologies include:

- Magnetic flux leakage tool: We use a high-resolution magnetic flux leakage tool (also known as a “smart pig”) to identify the location and severity of defects with potential to adversely affect pipelines.

- Geometry tool: We use geometry tools to measure dents, deformations and internal pipeline diameter.
- Ultrasonic crack detection: For pipeline segments with higher susceptibility to crack features, we use ultrasonic inspection technology. This tool emits ultrasound pulse waves which locate hard-to-find, crack-like defects in their earliest stage of development.

We use these tools to keep our systems and the communities near them safe.

Being prepared to handle any situation

Pipeline incidents are extremely rare. Should an incident occur, Pembina activates our Emergency Management Program (EMP).

We use the EMP to prepare for a response in the unlikely event of an incident. The EMP includes standards and processes to support the safety of the public, our workers and the environment. The EMP evaluates probable hazards from our operations and outside factors such as security breaches and natural disasters.

We run rigorous exercises, training and emergency response drills to ensure we’re ready to respond to emergency situations. Training activities range from tabletop scenarios, where we review procedures to full-scale exercises, where we field test our equipment and practice response skills.

To learn more about Pembina and how we keep our operations safe, visit our website at pembina.com.

Click or Call Before You Dig



Whether you’re planning a home improvement job, planting a tree or installing a fence, Click Before You Dig to safely identify buried utility lines. Visit clickbeforeyoudig.com to find your local damage prevention centre and details on how to request a land locate for your property.

Contact Information

Pembina Pipeline Corporation

Suite 4000, 585 – 8th Avenue S.W. Calgary, Alberta T2P 1G1

1-888-920-1979

community@pembina.com

www.pembina.com